



Blue Water Task Force

West Fork of Gallatin Aquarod Monitoring Project

November 8, 2006

BWTF Annual Meeting

Big Sky, Montana





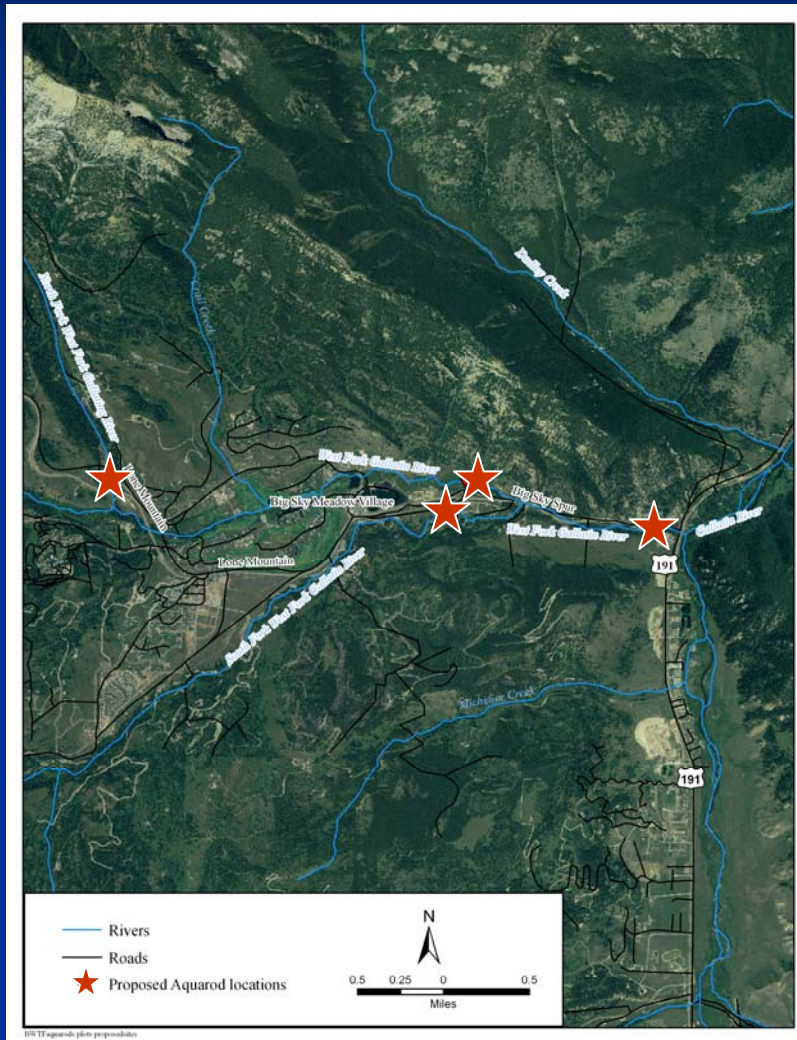
Blue Water Task Force West Fork of Gallatin Aquarod Monitoring Project

- Purpose of Project
 - Measure discharge in tributaries of West Fork of Gallatin 2006 and 2007 (April-October)
 - Measure flows over range of hydrograph
 - Create rating curve for aquarod data
 - Provide data for use in watershed planning





Blue Water Task Force West Fork of Gallatin Aquarod Monitoring Project



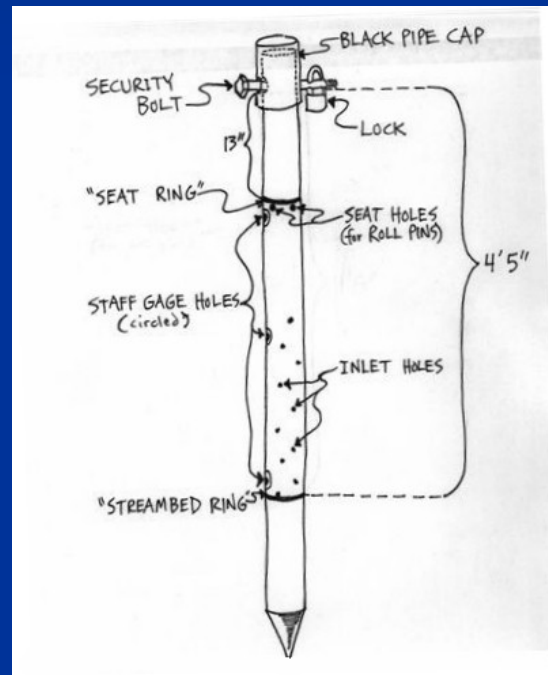
■ Sites

- North Fork below LMR
- South Fork at Knaubs
- West Fork below WWT
- West Fork below spur road bridge



Blue Water Task Force West Fork of Gallatin Aquarod Monitoring Project

■ Aquarod 101





Blue Water Task Force West Fork of Gallatin Aquarod Monitoring Project

- Aquarod Download
 - Download monthly
 - Connect to Laptop
 - Retrieve Output Files

```
DAT
Data Records: 2837
Serial Number: 3404
Model: 100
Date Time WT AT WL

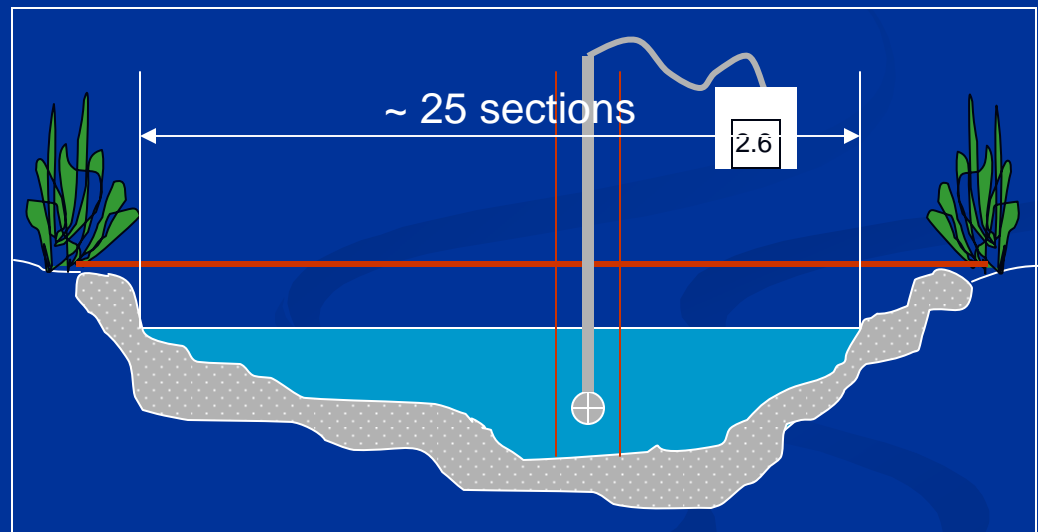
04/25 12:30 3 16 362
04/25 13:00 4 12 364
04/25 13:30 5 11 362
04/25 14:00 5 13 366
04/25 14:30 5 11 367
04/25 15:00 5 16 368
04/25 15:30 5 18 368
04/25 16:00 5 20 370
04/25 16:30 6 18 372
04/25 17:00 6 19 374
04/25 17:30 7 14 374
```





Blue Water Task Force West Fork of Gallatin Aquarod Monitoring Project

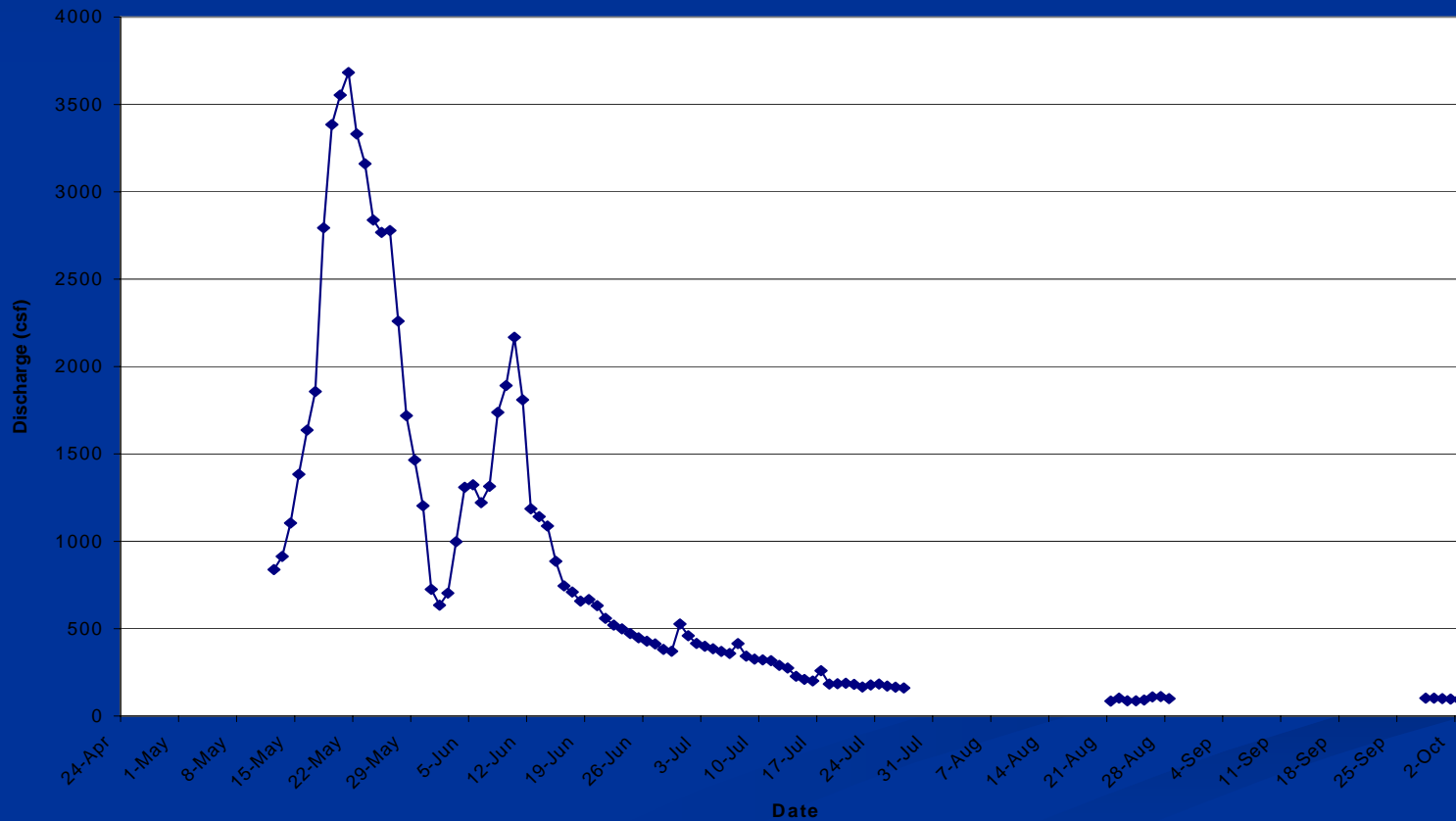
■ Measuring velocity





Blue Water Task Force West Fork of Gallatin Aquarod Monitoring Project

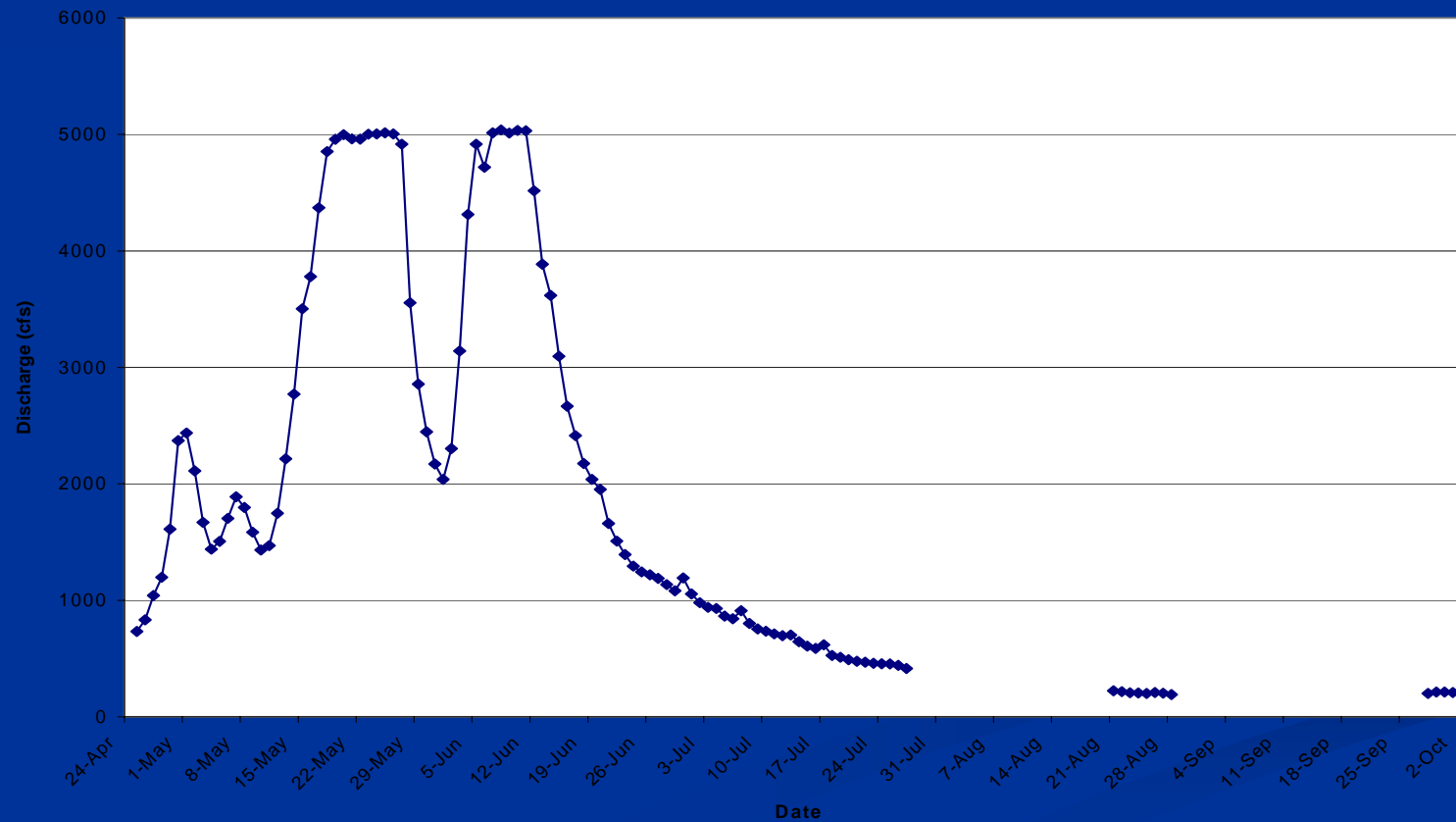
■ Results for Upper West Fork





Blue Water Task Force West Fork of Gallatin Aquarod Monitoring Project

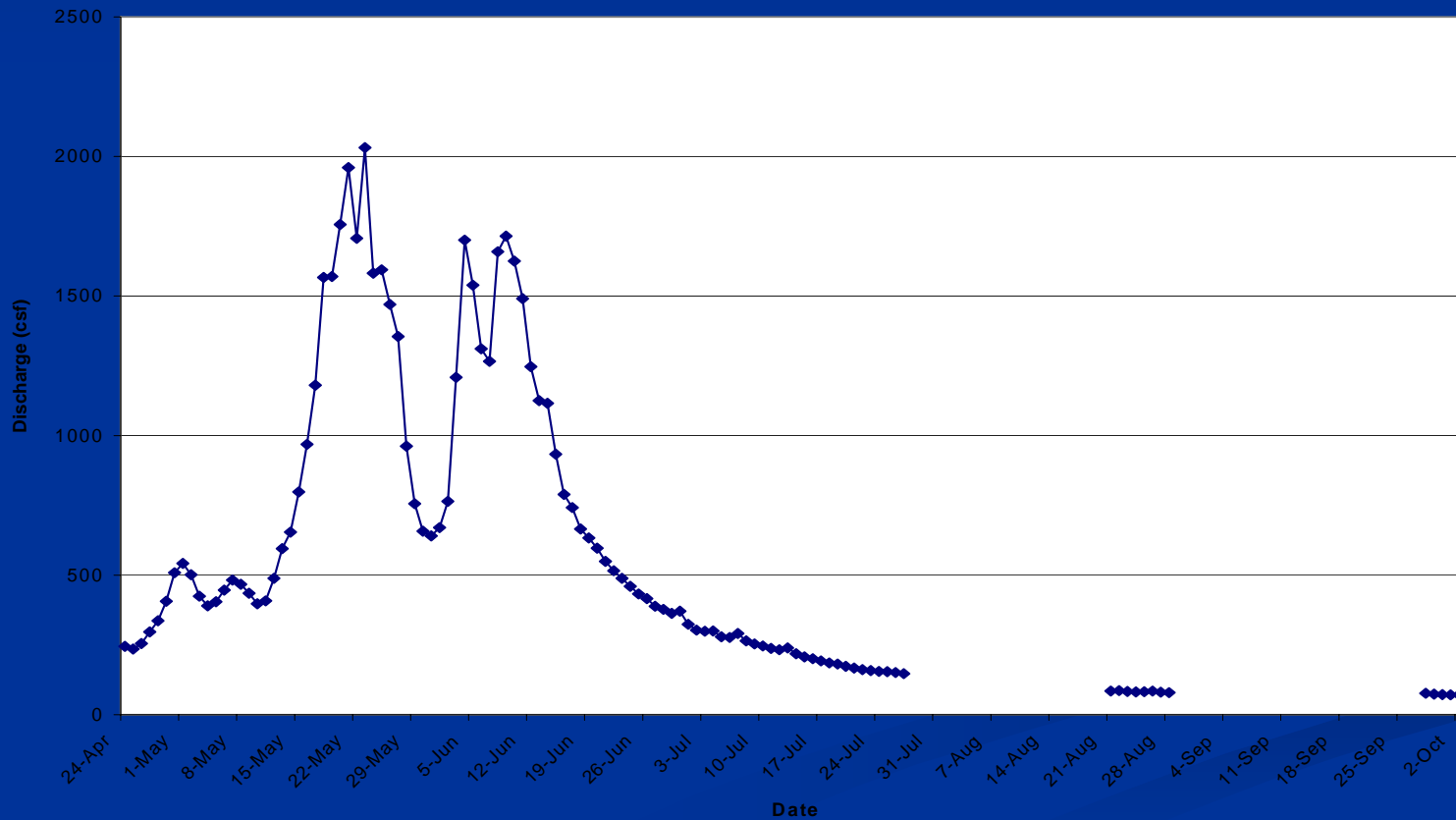
■ Results for Lower West Fork





Blue Water Task Force West Fork of Gallatin Aquarod Monitoring Project

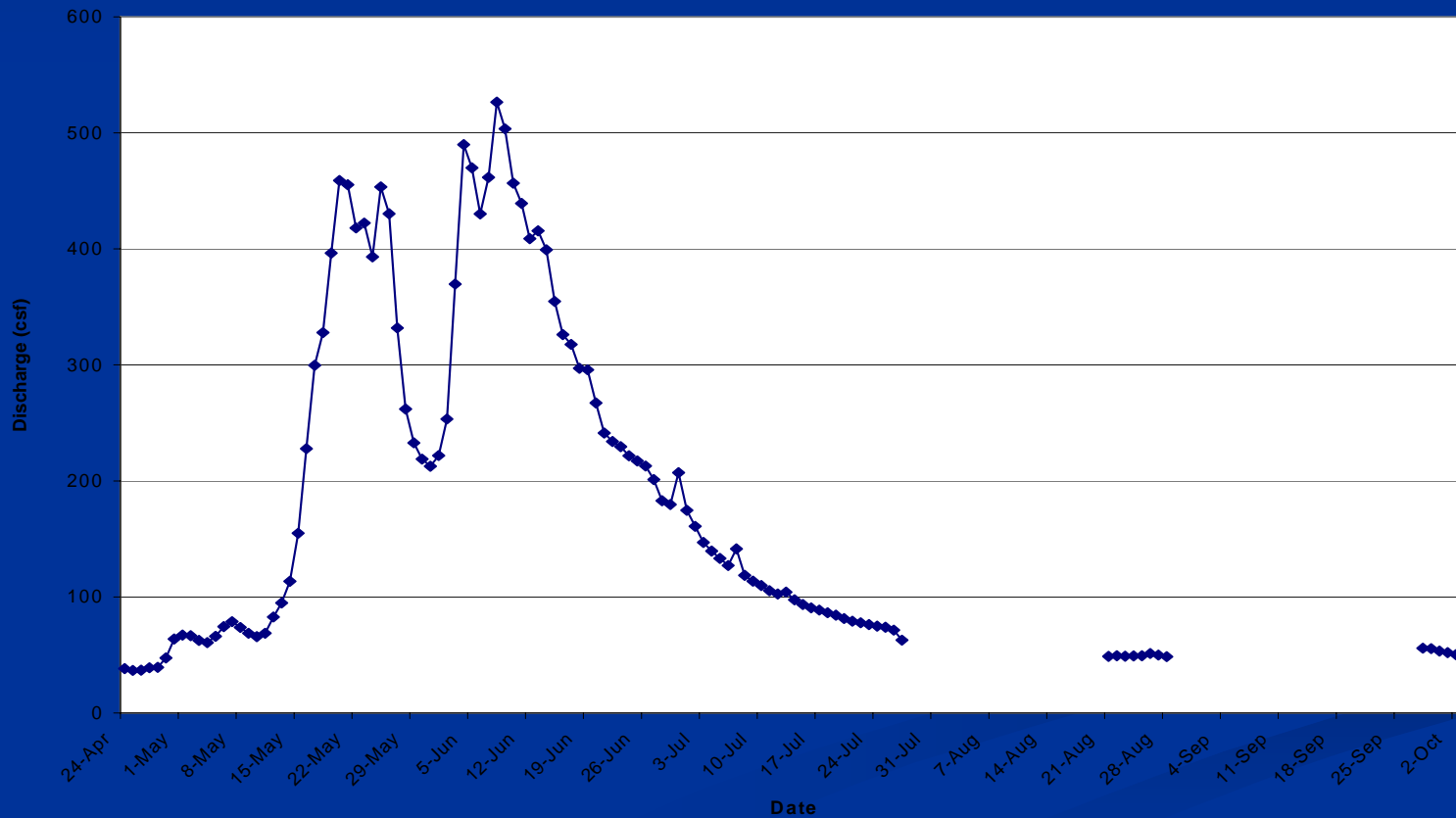
■ Results for South Fork





Blue Water Task Force West Fork of Gallatin Aquarod Monitoring Project

■ Results for North Fork





**Blue Water Task Force
West Fork of Gallatin Aquarod Monitoring Project**

- **Why is this study important?**
 - Appropriate alternative to installation of gaging station
 - Data from flow can be used for water use studies
 - Data from flow can be paired with data collected from other studies to calculate loads



Questions?

